

native pasture recovery

Management Target: Maintain or rehabilitate one million hectares of native pasture vegetation communities by 2016

■ Work Undertaken

Keith Francisco of Tindarey Station, near Cobar, has erected 22.5km of off-set electric fencing. Added to 120km of existing fencing, this will allow for complete grazing pressure control and native pasture regeneration on 16,000 hectares.

■ Benefits

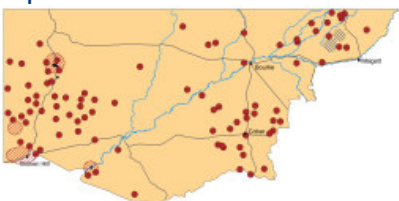
- Encouraging native pasture recovery
- Improving total grazing pressure management by excluding foxes, pigs and goats
- Ability to implement rotational grazing
- Ability to rest paddocks as required
- De-stocking during drought for improved regeneration after rain
- Reducing the spread of weeds, which are carried by pest animals

■ Other works

- Control of invasive native scrub to allow native grasses to regenerate
- Crocodiling for maximum moisture, mulch and seed, improving soil quality and biodiversity

■ Funding Year: 2005

Improvements funded in 2005-06



This project was funded through the Western CMA's incentive program, which is supported by the NSW and Australian Governments