

# community education

Management Target: There is a continual increase in land managers' awareness, knowledge and skills in natural resource management and adoption of practices which improve natural resource outcomes.

## ■ Work Undertaken

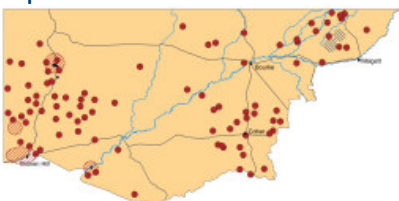
The Western CMA provided 100 subsidised copies of "The Glove Box Guide to Plants of the NSW Rangelands" to landholders within the Catchment

## ■ Benefits

- Providing an invaluable resource to landholders
- Enabling landholders to better identify plants, which is vital to managing the rangelands
- Assisting landholders who are experiencing financial difficulties

## ■ Funding Year: 2006

Improvements funded in 2005-06



WCMA staffer, Chris Higgins, using the Guide to identify plants



This project was funded through the Western CMA, which is supported by the NSW and Australian Governments