

water quality

Management Target: Water Quality and salinity levels meeting ANZECC drinking water and recreational use criteria for greater than 95% of the time at key town use sites by 2016.

■ Work Undertaken

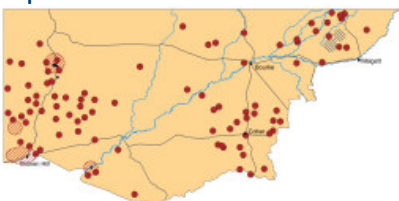
Jamie and Gina Warden of Kigwigil Station near Cumborah installed 38km of fencing, comprising fencing of The Big Warrambool and all other warrambools on the property.

■ Expected Benefits:

- 14km of The Big Warrambool is protected from the impacts of grazing
- Protecting the warrambools - natural water filtration systems
- More effectively managing 2,000 hectares
- Increasing vegetation cover
- Improving soil stability
- Maintaining vegetation corridors for birds and native animals
- Increasing the diversity of plants and animals

■ Funding Year: 2005

Improvements funded in 2005-06



Jamie and Gina Warden with three of their four children. Photo courtesy of the Daily Telegraph



This project was funded through the Western CMA's incentive program, which is supported by the NSW and Australian Governments