

native pasture recovery

Management Target: Maintain or rehabilitate one million hectares of native pasture vegetation communities by 2016

■ Work Undertaken

Neighbours, Ashley and Carolyn McMurtrie of Gilgunnia Station and Ty and Gina Rogerson of Buckwaroon Station west of Cobar, have combined efforts.

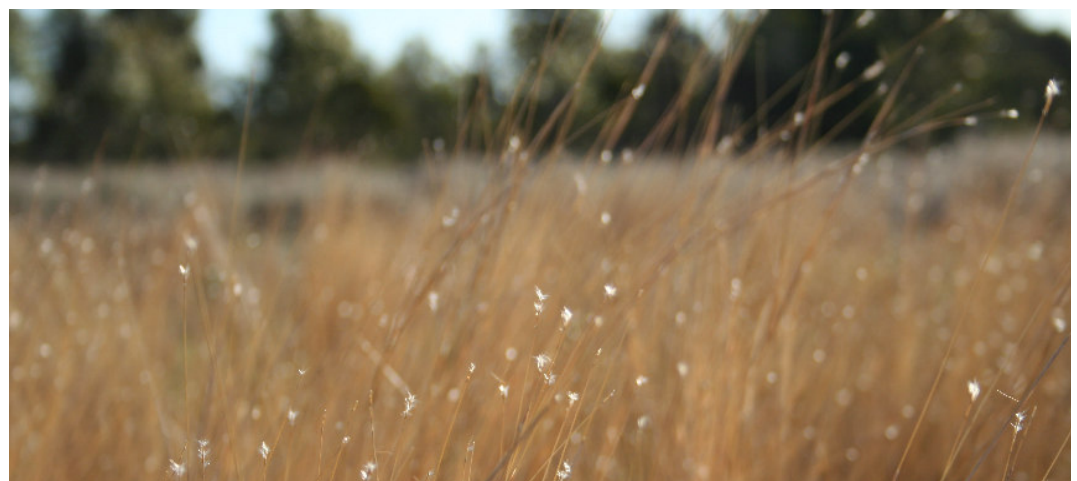
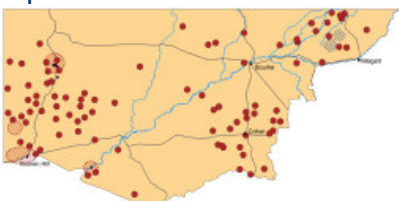
In total they will install 12 multi-species trapyards around water sources and are undertaking invasive native scrub control on 700 hectares.

■ Benefits

- Encouraging native pasture recovery
- Improving grazing management on 15,300 ha
- Limiting feral animal's access to water
- Removing wild goats and pigs
- Alleviating pressure on the land
- Avoiding overgrazing
- Improving environmental health and productivity

■ Funding Year: 2005

Improvements funded in 2005-06



Top Picture:
Ty and Gina Rogerson at rear, with
Ashley and Carolyn McMurtrie.



This project was funded through the Western CMA's incentive program, which is supported by the NSW and Australian Governments