

pest management

Management Target: No increase in the number of species or extent of pest weeds or animals above current levels and a reduction in the impact of pest species.

Work Undertaken

Mesquite control is being undertaken on 13 properties covering a total of 540km², which is 1.2 times the size of Kinchega National Park near Broken Hill.

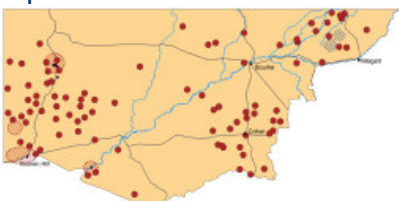
Benefits

- Controlling the very invasive 'Weed of National Significance'
- Reducing its potential to affect large areas
- Reducing its potential to affect grazing lands and productivity
- Ensuring access to dams and water-holes
- Reducing damage to animal hooves and vehicle tyres from thorns

Investment: \$99,000

Funding Year: 2005

Improvements funded in 2005-06



Nick Bonselaar of Windalee Station near Menindee and Peter Dennis of the spraying team.



This project was funded through the Western CMA's incentive program, which is supported by the NSW and Australian Governments