

sustainable agriculture

Management Target: Sustainable agriculture management practice carried out by 50% of landholders by 2016.

■ Work Undertaken

Stuart Mosely of Manuka Station, near Cobar, converted a chisel plough to direct drill.

■ Benefits

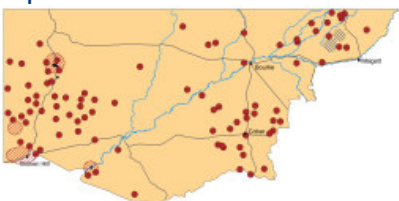
- Organic matter stays in the soil
- Improving soil health
- Improving moisture retention
- Removing exposure of bare soil
- Reducing soil erosion
- Preserving native grass seed bed
- Encouraging native grass
- Increasing sowing window to take advantage of moisture
- More precise seed placement
- Reducing working schedule
- Improving cost effectiveness

■ Other Works

- Fencing and improved total grazing management over 12,950 hectares, as part of an integrated land management improvement program.

■ Funding Year: 2005

Improvements funded in 2005-06



This project was funded through the Western CMA's incentive program, which is supported by the NSW and Australian Governments