

environmentally significant areas

Management Target: Ecological communities of high conservation value (including threatened species) are identified within three years of Catchment Plan approval and adequately protected throughout the Catchment by negotiation with landholders, within 8 years of Catchment Plan approval.

■ Work Undertaken

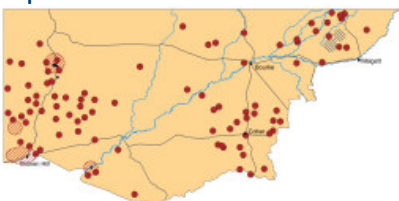
Michael & Shirley Mitchell of historic Mt Drysdale will erect 14km of fencing and remove stock and feral animals from 1,043 ha.

■ Benefits

- Protecting sites of historic significance including:
 - 500 ha gazetted as an "Aboriginal Place"
 - coloured ochres and rock wells
 - 19 varieties of edible trees
 - remnants of 19th century gold and silver mines
 - remains of hotels, bakery and police station
- Regenerating native vegetation following a recent fire
- Protecting native species such as kultarrs, echidnas and bats

■ Funding Year: 2005

Improvements funded in 2005-06



This project was funded through the Western CMA's incentive program, which is supported by the NSW and Australian Governments