

# community education

Management Target: There is a continual increase in the willingness of land managers, other stakeholders and the community to partner Natural Resource Management organisations to deliver natural resource outcomes.

## Work Undertaken

The Western CMA sponsored three landholders to attend the 14th Biennial Australian Rangeland Society Conference.

## Landholders

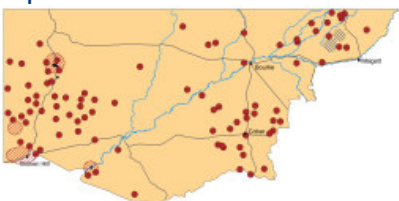
- Lachlan Gall of Coogee Lake Station, near Broken Hill
- Christine Ferguson of Myrnong Station near Wanaaring
- Tony Thompson of the Bourke area

## Benefits

- Increased knowledge of new initiatives in rangeland management
- Exposure to innovative management tools
- Opportunities to develop contacts
- Ability to focus on the 'big picture'
- Opportunity to share information with local community

## FundingYear: 2006

Improvements funded in 2005-06



*Lachlan Gall, Western CMA Chair, Rory Treweweke, Chris Ferguson and Tony Thompson at the conference*



This project was funded through the Western CMA, which is supported by the NSW and Australian Governments